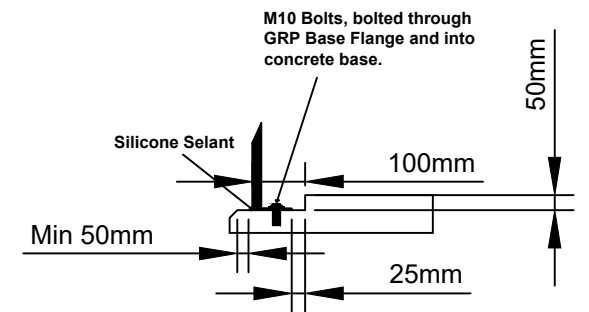


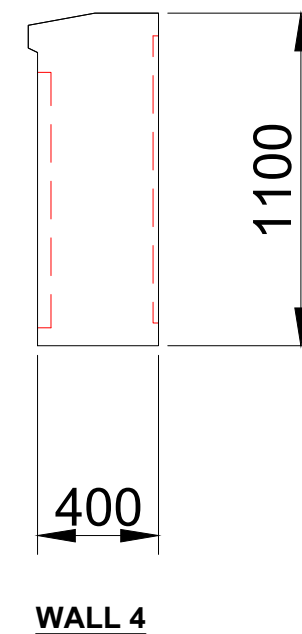
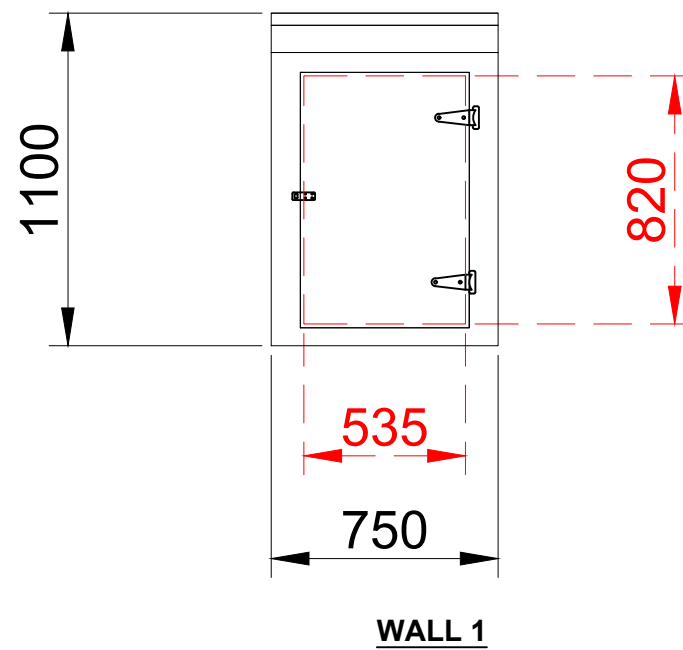
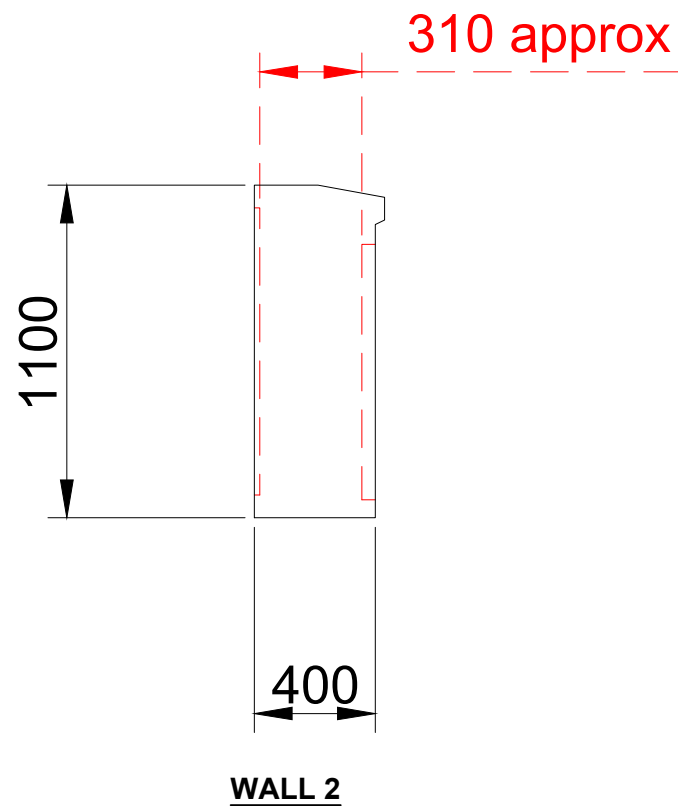
Typical Stepped Concrete Base Detail (Recommended)



NOTES:

SINGLE DOOR:

- 1no. 535mm Wide x 820mm High
- 2no. Stainless Steel Hinges
- 1no. Cylinder Night Latch Lock or Hasp & Staple



Company				External Finish: Semi Gloss		Internal Color: White		External Color: T.B.C.	
Contact									
Order #		-		Fire Resistance:BS476 Part 22- 1/2 hr.		Base Flange:		Roof Construction: GRP	
DWG #	ET4	Rev		Date	10/11/15	Scale	N/A	Doors: 1no.Single Door 535mm x 820mm (H)	
								Ventilation:	
								Wall Construction: GRP	